

| | | |
|----|---|---|
| 1 | Irene Artuso Milano | <ul style="list-style-type: none"> • TMRSS6 FAVORS HEPICIDIN INHIBITION BY ERYTHROFERRONE IN MICE BY IMPAIRING THE BMP SIGNALING |
| 2 | Nadia Bisso Genova | <ul style="list-style-type: none"> • EFFICACY AND FEASIBILITY OF FULL PEDIATRIC INDUCTION IN PHILADELPHIA CHROMOSOME NEGATIVE ACUTE LYMPHOBLASTIC LEUKEMIA YOUNGER ADULTS |
| 3 | Giuseppina Camiolo Catania | <ul style="list-style-type: none"> • HIGH-DENSITY NEUTROPHILS ARE ABERRANTLY ACTIVATED AND IMMUNOSUPPRESSIVE IN MULTIPLE MYELOMA |
| 4 | Elisa Coviello Genova | <ul style="list-style-type: none"> • EFFICACY AND FEASIBILITY OF R-CODOX-M/IVAC REGIMEN IN AGGRESSIVE DLBCL |
| 5 | Elisa Ferretti Genova | <ul style="list-style-type: none"> • ANTI TUMOR ACTIVITY OF INTERLEUKIN-17RB IN GERMINAL CENTER-DERIVED B CELL LYMPHOMAS |
| 6 | Elisa Genuardi Torino | <ul style="list-style-type: none"> • HASHCLONE: A NEW IGH-NGS APPROACH TO QUANTIFY MINIMAL RESIDUAL DISEASE IN B-CELL LYMPHOMA |
| 7 | Cesarina Giallongo Catania | <ul style="list-style-type: none"> • MYELOMA MESENCHYMAL STROMAL CELLS (MSC) CONTRIBUTE TO TUMOR MICROENVIRONMENT TRANSFORMATION |
| 9 | Rosa Greco Cosenza | <ul style="list-style-type: none"> • TREATMENT ACUTE MYELOID LEUKEMIA USING CYTOREDUCTIVE CHEMOTHERAPY CYTARABINE (ARA-C) FOLLOWED AZACITIDINE (AZA) MAINTENANCE: A REAL LIFE SINGLE CENTER EXPERIENCE |
| 9 | Fabio Guolo Genova | <ul style="list-style-type: none"> • A BLASTIC PLASMACYTOID DENDRITIC CELL NEOPLASM-LIKE PHENOTYPE IDENTIFIES A SUBGROUP OF NPM1-MUTATED AML PATIENTS WITH WORSE PROGNOSIS |
| 10 | Valeria Iachelli Catania | <ul style="list-style-type: none"> • CHARACTERIZATION OF CD9-CXCL12-CXCR4 EXPRESSION IN BIOLOGICAL SUBTYPES OF CHILDHOOD ACUTE LYMPHOBLASTIC LEUKEMIA: PRELIMINARY FINDINGS AND FUTURE PERSPECTIVES |
| 11 | Francesco La Rocca Rionero In Vulture (Pz) | <ul style="list-style-type: none"> • MICRORNA-155 IN SERUM EXTRACELLULAR VESICLES IS A POTENTIAL BIOMARKER FOR HEMATOLOGICAL MALIGNANCIES |
| 12 | Annamaria Petrunaro Cosenza | <ul style="list-style-type: none"> • EFFICACY OF ECUZUMAB IN SEVERE ADAMTS13 DEFICIENT THROMBOTIC THROMBOCYTOPENIC PURPURA (TTP) REFRACTORY TO STANDARD THERAPIES: REPORT OF TWO CASES |
| 13 | Giada Rotunno Firenze | <ul style="list-style-type: none"> • EPIDEMIOLOGY AND CLINICAL RELEVANCE OF MUTATIONS IN POSTPOLYCYTHEMIA VERA AND POSTESSENTIAL THROMBOCYTHEMIA MYELOFIBROSIS: A STUDY ON 359 PATIENTS OF THE AGIMM GROUP |
| 14 | Daniele Tibullo Catania | <ul style="list-style-type: none"> • BORTEZOMIB-INDUCED ER STRESS AND AUTOPHAGY ARE MODULATED BY HEME OXYGENASE 1 IN MULTIPLE MYELOMA (MM) CELLS |
| 15 | Stefania Trino Rionero In Vulture (Pz) | <ul style="list-style-type: none"> • A PYRAZOLO[3,4-D]PYRIMIDINE COMPOUND INHIBITS FYN PHOSPHORYLATION AND INDUCES APOPTOSIS IN NATURAL KILLER CELL LEUKEMIA |

GIOVEDÌ 17 NOVEMBRE 2016

- 13,00 Welcome buffet
- 14,00 Registrazione partecipanti
- 14,15 Apertura dei lavori

AULA ROMA

SESSIONE PLENARIA

SIMPOSIO CELGENE

Dalla ricerca alla pratica clinica: 10 anni innovazione in ematologia oncologica

Moderatori: Mario Boccadoro, Fabrizio Pane

- 14,30 **Mieloma multiplo: progressi e prospettive future**
Luca Franceschini (RM)
- 15,00 **Nuovi orizzonti nella terapia delle patologie mieloidi**
Marta Riva (MI)

SESSIONE EDUCAZIONALE ECM

Moderatori: Mario Boccadoro, Giovanni Pizzolo

- 15,30 **Terapie personalizzate nelle mielodisplasie**
Luca Maurillo (RM)
- 15,50 **Combinazioni terapeutiche con gli anticorpi monoclonali nel mieloma multiplo**
Francesca Gay (TO)
- 16,10 **Tossicità ed impatto del ferro libero su midollo e microambiente midollare**
Alessandro Isidori (PU)

- 16,30 Coffee Break

AULE: ROMA | PARIGI | LONDRA

SESSIONI PARALLELE

- 16,45 Presentazione e discussione dei contributi scientifici

- 19,15 **Test ECM e chiusura dei lavori del primo giorno**

VENERDÌ 18 NOVEMBRE 2016

(Per l'intera giornata non è previsto l'accreditamento ECM)

AULE: ROMA | PARIGI | LONDRA

SESSIONI PARALLELE

- 8,30 Presentazione e discussione dei contributi scientifici

AULA ROMA

11,00 SESSIONE POSTER

SESSIONE PLENARIA

12,00 SIMPOSIO JANSSEN

Moderatori: Mario Boccadoro, Giovanni Pizzolo

- Gli anticorpi monoclonali: una svolta nel trattamento del mieloma**
Paola Tacchetti (BO)

12,30 SIMPOSIO NOVARTIS

Moderatori: Mario Boccadoro, Giorgia Specchia

- Aplasia midollare: progressi acquisiti e nuove frontiere nella terapia non trapiantologica**
Francesco Grimaldi (NA)

13,00 SIMPOSIO Bristol-Myers Squibb

Moderatori: Sergio Amadori, Pellegrino Musto

- L'immunoterapia in ematologia inizia dal mieloma multiplo**
Sara Grammatico (RM)

- 13,30 Lunch

- 14,45 Presentazione e premiazione dei vincitori

- 16,00 Chiusura dei lavori

STEERING COMMITTEE:

SERGIO AMADORI, **ROMA** | MARIO BOCCADORO, **TORINO** | PAOLO CORRADINI, **MILANO** | ROBIN FOÀ, **ROMA** | PELLEGRINO MUSTO, **RIONERO IN VULTURE (PZ)** | FABRIZIO PANE, **NAPOLI** | GIOVANNI PIZZOLO, **VERONA** | GIORGINA SPECCHIA, **BARI**

FACULTY:

EMANUELE ANGELOCCI, **CAGLIARI** | ALBERTO BOSI, **FIRENZE** | ROBERTO CAIROLI, **MILANO** | CLARA CAMASCHELLA, **MILANO** | FRANCESCO DI RAIMONDO, **CATANIA** | BRUNANGELO FALINI, **PERUGIA** | RENATO FANIN, **UDINE** | FELICETTO FERRARA, **NAPOLI** | GIANLUCA GAIDANO, **NOVARA** | MARCO GOBBI, **GENOVA** | FORTUNATO MORABITO, **COSENZA** | STEFANO A. PILERI, **MILANO** | PIER LUIGI ZINZANI, **BOLOGNA**

TALENT SCOUT TEAM:

NICCOLÒ BOLLI, **MILANO** | PAOLO GALLIPOLI, **CAMBRIDGE (UK)** | ANTONELLA NAI, **MILANO** | MARIANGELA PALLADINO, **ROMA** | CHIARA PALMI, **MONZA** | DAVIDE ROSSI, **BELLINZONA (CH)** | MARIA ROSARIA SAPIENZA, **BOLOGNA** | SARAH TETTAMANTI, **MONZA** | ENRICO TIACCI, **PERUGIA**

PATROCINI:
SIE - SOCIETÀ ITALIANA DI EMATOLOGIA
SIES - SOCIETÀ ITALIANA DI EMATOLOGIA SPERIMENTALE

GOLDEN SPONSOR:

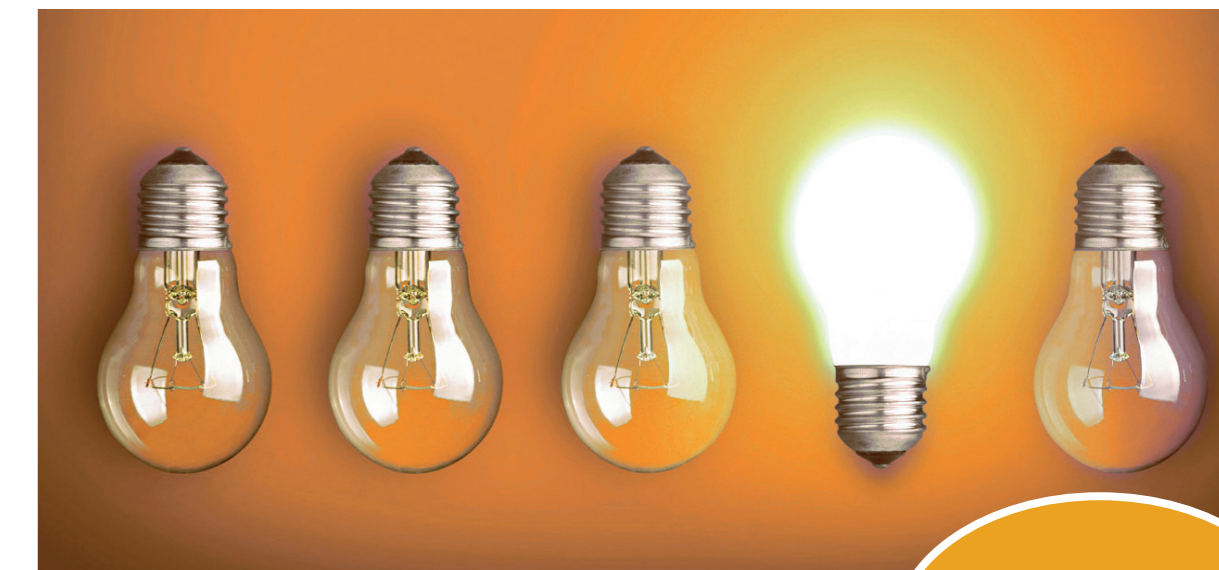


SILVER SPONSOR:



UNDER 40 *in* HEMATOLOGY

GIOVANI EMATOLOGI A CONFRONTO | 2016



JOIN THE COMMUNITY
WWW.UNDER40.IT



AULA ROMA | GIOVEDÌ 17 NOVEMBRE ORE 16,45

| | | |
|----|--|---|
| 1 | Lucia Brunello Torino | <ul style="list-style-type: none">A COMPARATIVE STUDY OF BIOSIMILAR G-CSFS VERSUS ORIGINATOR GCSFS FOR CD34+ CELLS MOBILIZATION AND AUTOGRAFTING IN HEMATOLOGICAL MALIGNANCIES |
| 2 | Giuseppina Uccello Cosenza | <ul style="list-style-type: none">VALIDATION OF THE CLL-IPI AND COMPARISON WITH THE MDACC PROGNOSTIC INDEX: ANALYSIS OF 1364 NEWLY DIAGNOSED PATIENTS |
| 3 | Giada Dal Collo Verona | <ul style="list-style-type: none">CRITICAL ROLE OF NOTCH IN B-CELL PRECURSOR ACUTE LYMPHOBLASTIC LEUKEMIA (B-ALL): FROM CELL LINE TO PATIENTS |
| 4 | Bruno Fattizzo Milano | <ul style="list-style-type: none">IMPACT OF BONE MARROW FIBROSIS AND EARLY RESPONSE ON OUTCOME AFTER AZACITIDINE THERAPY IN 94 PATIENTS WITH MYELODISPLASTIC SYNDROMES, CHRONIC MYELOMONOCYTIC LEUKEMIA AND ACUTE MYELOID LEUKEMIA |
| 5 | Francesco Autore Roma | <ul style="list-style-type: none">STUDY OF THE CORRELATIONS OF CLINICAL AND BIOLOGICAL CHARACTERISTICS IN TREATMENT-NAÏVE PATIENTS AFFECTED BY CHRONIC LYMPHOCYTIC LEUKEMIA WITH TRISOMY 12: LDH LEVELS PREDICT PROGRESSION-FREE SURVIVAL |
| 6 | Barbara Castella Torino | <ul style="list-style-type: none">IMMUNE CHECKPOINT BLOCKADE COMBINATIONS AS PROMISING STRATEGY FOR CANCER IMMUNOTHERAPY IN MULTIPLE MYELOMA PATIENTS |
| 7 | Federica Melazzini Pavia | <ul style="list-style-type: none">CLINICAL AND PATHOGENETIC CHARACTERIZATION OF ETV6-RELATED THROMBOCYTOPENIA, AN INHERITED THROMBOCYTOPENIA PREDISPOSING TO CHILDHOOD ACUTE LYMPHOBLASTIC LEUKEMIA |
| 8 | Giada Biddeci Padova | <ul style="list-style-type: none">FEATURES OF AVASCULAR OSTONECROSIS IN CHILDREN TREATED FOR ACUTE LYMPHOBLASTIC LEUKAEMIA: EXPERIENCE IN A SINGLE CENTER |
| 9 | Nice Turazzi Monza | <ul style="list-style-type: none">BAFF RECEPTOR (BAFF-R) CAR-REDIRECTED T CELLS: A NOVEL TOOL TO ERADICATE HIGH RISK B-CELL ACUTE LYMPHOBLASTIC LEUKEMIA (B-ALL) |
| 10 | Francesco Saraceni Ancona | <ul style="list-style-type: none">MATCHED AND MISMATCHED UNRELATED DONOR COMPARED TO AUTOLOGOUS STEM CELL TRANSPLANTATION FOR ACUTE MYELOID LEUKEMIA IN FIRST COMPLETE REMISSION: A RETROSPECTIVE, PROPENSITY SCORE-WEIGHTED ANALYSIS FROM THE ALWP OF THE EBMT |

AULA ROMA | VENERDÌ 18 NOVEMBRE ORE 8,30

| | | |
|----|--|--|
| 11 | Valentina Gianfelici Roma | <ul style="list-style-type: none">RNA SEQUENCING UNRAVELS THE GENETICS OF REFRACTORY/RELAPSED T-CELL ACUTE LYMPHOBLASTIC LEUKEMIA. PROGNOSTIC AND THERAPEUTIC IMPLICATIONS |
| 12 | Nellina Maria Ausilia Andriano Catania | <ul style="list-style-type: none">DISSECTING THE DNA REPAIR MACHINERY IN BIOLOGICAL SUBGROUPS OF CHILDHOOD ACUTE LYMPHOBLASTIC LEUKEMIA |
| 13 | Francesca Schieppati Brescia | <ul style="list-style-type: none">INTRAVENOUS IMMUNOGLOBULIN (IVIG) IS AN EFFECTIVE TREATMENT FOR T-CELL-MEDIATED IMMUNE CYTOPENIAS IN MYELODYSPLASTIC SYNDROMES (MDS) AND OTHER BONE MARROW FAILURE (BMF) SYNDROMES |
| 14 | Rosario Di Maggio Palermo | <ul style="list-style-type: none">β-THALASSEMIA HETEROZYGOTE STATE DETRIMENTALLY AFFECTS HEALTH EXPECTATION AND MORTALITY |

| | | |
|----|--|---|
| 15 | Benedetta Accordi Padova | <ul style="list-style-type: none">PHARMACOLOGICAL INHIBITION OF LCK IS ABLE TO REVERT GLUCOCORTICOID RESISTANCE IN PEDIATRIC T-ALL |
| 16 | Alessia Pagani Milano | <ul style="list-style-type: none">BMP6/HEPCIDIN CIRCUIT IN THE LIVER AND ITS RELATIONSHIP WITH ERYTHROPOIESIS |
| 17 | Fabio Guolo Genova | <ul style="list-style-type: none">MINIMAL RESIDUAL DISEASE DIRECTED THERAPY FOR RELAPSING ACUTE MYELOID LEUKEMIA PATIENTS WITH MUTATED NPM1: PRELIMINARY RESULTS FROM A PILOT STUDY |
| 18 | Elisa Rumi Pavia | <ul style="list-style-type: none">GENETIC PREDISPOSITION TO FAMILIAL CASES OF MYELOPROLIFERATIVE NEOPLASMS |
| 19 | Alberto Mussetti Milano | <ul style="list-style-type: none">REDUCED-INTENSITY TRANSPLANTATION FOR LYMPHOMAS USING HAPLOIDENTICAL RELATED DONORS VERSUS HLA-MATCHED UNRELATED DONORS |
| 20 | Roberto Mina Torino | <ul style="list-style-type: none">AN INTEGRATED ANALYSIS OF CARDIO-VASCULAR ADVERSE EVENTS OF CARFILZOMIB, CYCLOPHOSPHAMIDE AND DEXAMETHASONE IN ELDERLY NEWLY DIAGNOSED MYELOMA PATIENTS ENROLLED IN 3 PHASE I/II TRIALS |

AULA PARIGI | GIOVEDÌ 17 NOVEMBRE ORE 16,45

| | | |
|---|--|---|
| 1 | Olivia Marini Verona | <ul style="list-style-type: none">IDENTIFICATION OF GRANULOCYTIC MYELOID-DERIVED SUPPRESSOR CELLS (G-MDSCS) IN THE PERIPHERAL BLOOD OF HODGKIN AND NON-HODGKIN LYMPHOMA PATIENTS |
| 2 | Marzia Cavalli Roma | <ul style="list-style-type: none">COMPARATIVE ANALYSIS BETWEEN RQ-PCR AND DIGITAL DROPLET PCR OF BCL2/IGH REARRANGEMENT IN THE PERIPHERAL BLOOD AND BONE MARROW OF STAGE I/II FOLLICULAR LYMPHOMA |
| 3 | Manuel Gotti Pavia | <ul style="list-style-type: none">INTEGRATED MOLECULAR AND CLINICAL PROFILING TO OPTIMIZE OUTCOME PREDICTION IN SPLENIC MARGINAL ZONE LYMPHOMA |
| 4 | Elena Pomari Padova | <ul style="list-style-type: none">NPM-ALK EXPRESSION LEVELS IDENTIFY TWO DISTINCT SUBTYPES OF PEDIATRIC ANAPLASTIC LARGE CELL LYMPHOMA |
| 5 | Giulia Corradi Bologna | <ul style="list-style-type: none">UPREGULATION OF INDOLEAMINE 2,3-DIOXYGENASE ENZYMES IN LEUKEMIC MESENCHYMAL STROMAL CELLS (MSCS) : A MECHANISM REGULATING MSC/ACUTE MYELOID LEUKEMIA CELL CROSS TALK |
| 6 | Roberta Zini Modena | <ul style="list-style-type: none">MIR-382-5P CONTROLS HEMATOPOIETIC STEM CELL DIFFERENTIATION THROUGH THE DOWNREGULATION OF MXD1 |
| 7 | Grazia Fazio Monza | <ul style="list-style-type: none">A VERSATILE RNA NGS TARGETED CAPTURE STRATEGY TO DETECT FUSION GENES IN ACUTE LYMPHOBLASTIC LEUKEMIA |
| 8 | Mattia D’Agostino Torino | <ul style="list-style-type: none">SOMATIC MUTATIONS’ PROFILE BY NEXT GENERATION SEQUENCING CONFERS PROGNOSTIC VALUE IN NEWLY DIAGNOSED MULTIPLE MYELOMA PATIENTS: AN ANALYSIS FROM THE MMRF COMMPASS STUDY |
| 9 | Silvia Salmoiraghi Bergamo | <ul style="list-style-type: none">TP53 GENE MUTATIONS IN ADULT ACUTE LYMPHOBLASTIC LEUKEMIA DO NOT AFFECT THE HEMATOLOGIC RESPONSE ACHIEVEMENT BUT IS ASSOCIATED WITH EARLY RELAPSE AND VERY POOR PROGNOSIS |

AULA PARIGI | VENERDÌ 18 NOVEMBRE ORE 8,30

| | | |
|----|---|---|
| 10 | Anna Lucia Fedullo Roma | <ul style="list-style-type: none">GENOMIC CHARACTERIZATION OF ADULT PH+ ACUTE LYMPHOBLASTIC LEUKEMIA (ALL). PROGNOSTIC IMPLICATIONS |
| 11 | Paola Minetto Genova | <ul style="list-style-type: none">MINIMAL RESIDUAL DISEASE ASSESSMENT MAY DRIVE CONSOLIDATION THERAPY IN ACUTE MYELOID LEUKEMIA. IT’S TIME FOR MRD-DRIVEN DECISION MAKING |
| 12 | Federica Lovisa Padova | <ul style="list-style-type: none">COMPREHENSIVE CHARACTERIZATION OF PLASMATIC EXOSOMES IN PEDIATRIC ANAPLASTIC LARGE-CELL LYMPHOMA: NEW TOOLS FOR MONITORING CANCER PROGRESSION |
| 13 | Carlo Zaninetti Pavia | <ul style="list-style-type: none">PERSONALIZED REFERENCE INTERVALS FOR PLATELET COUNT REDUCE THE PREVALENCE OF UNEXPLAINED THROMBOCYTOPENIA |
| 14 | Monica Casucci Milano | <ul style="list-style-type: none">LNGFR-SPACED CAR-T CELLS SPECIFIC FOR THE ONCO-ANTIGEN CD44V6 FOR THE IMMUNOTHERAPY OF ACUTE MYELOID LEUKEMIA AND MULTIPLE MYELOMA |
| 15 | Patrizia Sciancalepore Torino | <ul style="list-style-type: none">ATP-BINDING-CASSETTE A1 REGULATES EXTRACELLULAR ISOPENTENYL PYROPHOSPHATE RELEASE AND Vγ9Vδ2 T-CELL ACTIVATION BY DENDRITIC CELLS |
| 16 | Manuela Gambella Torino | <ul style="list-style-type: none">EVALUATION OF MINIMAL RESIDUAL DISEASE BY ASO-RQ-PCR IN MULTIPLE MYELOMA: RESULTS FROM 2 PHASE III STUDIES IN PATIENTS TREATED WITH LENALIDOMIDE AFTER FRONT-LINE THERAPY |
| 17 | Laura Cicconi Roma | <ul style="list-style-type: none">PML-RARα KINETICS AND IMPACT OF FLT3-ITD MUTATIONS IN NEWLY DIAGNOSED ACUTE PROMYELOCYTIC LEUKEMIA TREATED WITH ATRA AND ATO OR ATRA AND CHEMOTHERAPY |
| 18 | Maria Chiara Fontana Bologna | <ul style="list-style-type: none">CHROMOTHRIPSIS IN ACUTE MYELOID LEUKEMIA IS STRONGLY ASSOCIATED WITH POOR PROGNOSIS AND WITH TP53 ALTERATIONS |
| 19 | Michela Asperti Brescia | <ul style="list-style-type: none">HEPARINS AS HEPICIDIN MODULATORS FOR ANEMIA OF INFLAMMATION |

AULA LONDRA | GIOVEDÌ 17 NOVEMBRE ORE 16,45

| | | |
|---|---|---|
| 1 | Chiara Cavallini Verona | <ul style="list-style-type: none">INTEGRATION OF B-CELL RECEPTOR-INDUCED ERK SIGNALING AND MUTATIONS OF SF3B1 GENE REFINES PROGNOSIS IN TREATMENT NAIVE CHRONIC LYMPHOCYTIC LEUKEMIA |
| 2 | Andrea Ghelli Luserna Di Rorà Bologna | <ul style="list-style-type: none">PREXASERTIB, A CHK1/CHK2 INHIBITOR, INCREASES THE EFFECTIVENESS OF CONVENTIONAL THERAPY IN B-/T- CELL PROGENITOR ACUTE LYMPHOBLASTIC LEUKEMIA |
| 3 | Chiara Cerrato Torino | <ul style="list-style-type: none">UPFRONT OR RESCUE TRANSPLANT IN NEWLY DIAGNOSED YOUNG MULTIPLE MYELOMA PATIENTS: POOLED ANALYSIS OF 529 PATIENTS |
| 4 | Caterina Ilari Roma | <ul style="list-style-type: none">COPY NUMBER ANALYSIS OF THE BIRC3 GENE BY DROPLET DIGITAL PCR IN CHRONIC LYMPHOCYTIC LEUKEMIA PATIENTS WITH 11Q DELETION |
| 5 | Giacomo Oliveira Milano | <ul style="list-style-type: none">TRACKING GENETICALLY ENGINEERED LYMPHOCYTES LONG-TERM REVEALS THE DYNAMICS OF T-CELL IMMUNOLOGICAL MEMORY |
| 6 | Francesco Mendicino Cosenza | <ul style="list-style-type: none">LENALIDOMIDE AND LOW-DOSE DEXAMETHASONE (RD) VERSUS BORTEZOMIB, MELPHALAN, PREDNISONE (VMP) IN ELDERLY NEWLY DIAGNOSED MULTIPLE MYELOMA PATIENTS: A RETROSPECTIVE STUDY |

| | | |
|----|---|--|
| 7 | Maria Abbattista Milano | <ul style="list-style-type: none">THROMBOSIS IN PATIENTS WITH HEPATOCELLULAR CARCINOMA AFTER ORTHOTOPIC LIVER TRANSPLANTATION, THE ROLE OF FACTOR V LEIDEN AND G20210A PROTHROMBIN MUTATION |
| 8 | Antonella Teramo Padova | <ul style="list-style-type: none">STAT3 MUTATION IMPACTS BIOLOGICAL AND CLINICAL FEATURES OF T-LGL LEUKEMIA |
| 9 | Alessandra Romano Catania | <ul style="list-style-type: none">THE PROGNOSTIC VALUE OF THE MYELOID-MEDIATED IMMUNOSUPPRESSION MARKER ARGINASE-1 IN CLASSIC HODGKIN LYMPHOMA |
| 10 | Maria Caterina Rotiroti Monza | <ul style="list-style-type: none">SPECIFIC TARGETING OF ACUTE MYELOID LEUKEMIA BY THE USE OF ENGINEERED CIK (CYTOKINE-INDUCED KILLER) CELLS EXPRESSING THE ANTI-CD33 CHIMERIC ANTIGEN RECEPTOR (CAR) |

AULA LONDRA | VENERDÌ 18 NOVEMBRE ORE 8,30

| | | |
|----|--|--|
| 11 | Marianna Rossi Rozzano (MI) | <ul style="list-style-type: none">PIATTAFORMA MOLECOLARE “HEME PANEL” PER LO STUDIO DELL’EMOPOIESI CLONALE E SCREENING PRECOCE DELLE SINDROMI MIELODISPLASTICHE |
| 12 | Monica Messina Roma | <ul style="list-style-type: none">THE BCR/ABL1-LIKE PREDICTOR: A NEW Q-RT-PCR-BASED TOOL TO IDENTIFY ADULT BCR/ABL1-LIKE ACUTE LYMPHOBLASTIC LEUKEMIA CASES |
| 13 | Massimiliano Gambella Genova | <ul style="list-style-type: none">NEGATIVE PRE TRANSPLANT MINIMAL RESIDUAL DISEASE, ASSESSED BY FLOW CYTOMETRY, IMPROVES OUTCOME IN ADULT ACUTE LYMPHOBLASTIC LEUKEMIA, ESPECIALLY IF CLEARENCE IS ACHIEVED EARLY DURING INDUCTION |
| 14 | Irene Dogliotti Torino | <ul style="list-style-type: none">MYD88L265P MUTATION DETECTION IN WALDENSTRÖM MACROGLOBULINEMIA BY DROPLET DIGITAL PCR: MINIMAL RESIDUAL DISEASE MONITORING AND CHARACTERIZATION ON CIRCULATING FREE DNA |
| 15 | Fary Diop Novara | <ul style="list-style-type: none">DIFFUSE LARGE B-CELL LYMPHOMA GENOTYPING ON THE LIQUID BIOPSY |
| 16 | Giovanni Roti Boston (Usa) | <ul style="list-style-type: none">A LEUKEMIA-SELECTIVE DELIVERY STRATEGY FOR MUTANT NOTCH1 TARGETED THERAPY |
| 17 | Francesco Maura Milano | <ul style="list-style-type: none">WHOLE GENOME SEQUENCING OF PAIRED ASYMPTOMATIC-SYMPTOMATIC MM SAMPLES REVEALS A GENOMIC LANDSCAPE WITH DIVERSE EVOLUTIONARY PATTERNS AND MUTATIONAL PROCESSES |
| 18 | Ramona Cassin Milano | <ul style="list-style-type: none">IDELALISIB RAPIDLY IMPROVES PLATELETS FUNCTION IN PATIENTS WITH CHRONIC LYMPHOCYTIC LEUKEMIA (CLL) |
| 19 | Elena Vendramini Padova | <ul style="list-style-type: none">DIFFERENTIALLY EXPRESSED NON-CODING RNA IMPROVES CLASSIFICATION OF ERG-RELATED PEDIATRIC B CELL PRECURSOR ACUTE LYMPHOBLASTIC LEUKEMIA |
| 20 | Giuseppe Lia Torino | <ul style="list-style-type: none">EXTRACELLULAR VESICLES AS POTENTIAL BIOMARKER FOR ACUTE GRAFT-VERSUS-HOST-DISEASE |